

Kundalini Omega Minus Function Activations Self-Attunements



By: Mariah “Windsong” Couture

This is a series of 5 Self Attunements you receive by affirmations.

They were put into Eternal Moments™ which will release Kundalini Omega Minus Function attunements unto you when you speak or mentally say these affirmations with the intent to receive.

- 1) Foundation
- 2) Awaken and Rise
- 3) Transposition
- 4) Zeroth Point Energy Configuration
- 5) Omega Minus Function Activation

1st Attunement's Companion **Information**

The Angelic Order of the Ishim assists people to raise their consciousness to withstand and thrive at 5th dimensional and higher frequencies while in physicality.

They arrive into the inner Shekhina worlds, molecularly and to the Microcosm Within.

The Shekhina, known as the Fire of the Holy Spirit provides the Feminine Transpositioning for Reception into our Birthright of connectivity with Higher Worlds while in physicality here.

Feminine and Masculine, when perceived as the Alpha and Omega, are as field and focus.

Envelopes of Light Energy embodiments carry you into the various evolutionary possibilities as you work with Angelic Hierarchies and Deities while thriving in physicality here on Earth.

Mem is a letter of the Hebrew Aleph-Beth which represents water.

There are two forms of Mem used in Hebrew writing; The first; the open Mem, is used at the beginning of a sentence. The second; the closed Mem, is used at the end of a sentence.

The open Mem displays the Wonders of Divinity and Creation. The closed Mem reminds us that there are Hidden Mysteries.



On the Sephirot Tree of Life, Hod, Binah and Chesed
are the Powers of water. The Sephirot Tree of Life
energy centers are within our body also.
Hod is the right hip, Binah is the right side of your head,
And Chesed is your left shoulder.
Hod Ha-Melek Zedek, Melchizedek Meshiakh=
The Splendor of the Righteous King and the Messiahship
of Melchizedek
Binah Ruach Devekut=clinging to God thru the Spirit of
Understanding
Chesed Tushiyah Shiloh=The place of loving kindness
within God.
You will be attuned to Kundalini Tummo Reiki, level 1.
This will prepare your body and fields for the energies of
all KOMF attunements.

Kundalini Omega Minus Function

1st Attunement Affirmation:

Shekhina Esh! (Fire of the Holy Spirit)
Arrive to me now, bringing your Flame of Eternal Life
Into the nucleus of each cell in my body!
Purify me NOW!!!!!!
Burn brightly so I may feel the Divinity I AM!
I now receive the Angelic Ishim's
far reaching foundational Empowerment;
Kundalini Tummo Reiki Level 1
and both forms and Gifts of Mem
through Dolphins' Grace and Love.

2nd Attunement's Companion Information

The Kundalini is your Sacred Sexuality.
(Your Sacred Creative Spiritual Energy)
It is dormant in most people. You may have already
experienced the rising of your Kundalini.
You may love it, or be frustrated with it.
There are people who have felt their Kundalini's
flow and feel helpless to control it.
No matter your current Kundalini status of awakening this
attunement has many benefits for you. If it has not already
risen, this attunement prepares you on many levels for
ease, when your Kundalini does choose to rise.

Kundalini Tummo Reiki, Level 2 is dispensed to you by KOMF's second attunement affirmation.

This ensures ease and provides energetic support during the dissolving of seals that are naturally in your spine. The seals' job has been to hold back Kundalini's rise, until you are spiritually ready. The timing of the release of those seals is under the authority of your Higher Self.

It is not necessary to feel your Kundalini before proceeding with the remaining attunements. Your Kundalini will easily respond to your will and that of ArchAngel Uriel, under whose dominion the Kundalini Fire is.

Uriel provides Earth, Air, Fire and Water connection. The colors he extended to you are: Violet, Indigo, Lavender and Silver. His image is that of an open hand with a flame sitting upon it. Yod, a letter in the Hebrew Aleph Beth, is the image of a hand and is also called the spark of life or flame of God. It is associated with the Yod-Spectrum-Superscripts. They are the fire-letters, Divine Frequencies for Regeneration that are missing from this dimensional reality. These are keys of many Sacred Languages, and Fire Letters.

Once your Kundalini has chosen to awaken, you will usually feel a heat begin in your perineum area, at the base of your body and rise up your spine. Use the image of a gas oven's dial to turn your Kundalini energy's intensity up or down.

Once it has awoken, you can even turn the dial to 'off' and know that the pilot light of your Kundalini remains lit in your sacral region. It will simply slumber in rest until you or something else causes it to rise again.

It is very protective of you and your loved ones.

Let there be no surprises for you here,
an awake Kundalini often responds to fight or flight
situations. If you feel the rush in your bloodstream from
your adrenal glands when a situation around you sparks
the fight or flight feeling, your Kundalini may also rise
giving you a boost physically and emotionally.

Kundalini Energy IS the synergy of your Sacred Fire and
Divinity's Fire within you. It connects you to the center of the
Earth, the center of the Central Sun, the Center of the Heart
of Eternal Divine God/dess Source.

Your homing beacon to home resides within your
Kundalini.



Kali is a Goddess of the Kundalini. Ke-ua-a-ke-po Hawaiian
Spirit of Fire and Water brings synergy.

Crow is known to many tribes as having gone to
retrieve fire from the sun for the people.

His feathers were rainbow hues when he left,
and while returning with the flame, he was singed black
and has remained so since.



Shin is a letter in the Hebrew Aleph-Beth representing the
Winged Lion, Tooth, and Trinities.
Shin is also triple crown of Holy Flames.

The act of fire stirs communication,
and humans gain wisdom and discernment.
Geburah, Chokmah, and Netzach are the Sephira powers
of Fire on the Sephirot Tree of Life.
Divine Hebrew Names and equivalent meanings:
Shel Shem Geburah=Strength of the Holy Name
Chokmah Michaelilu= Wisdom of Archangel Michael
Netzach Merkavah Eliahu= Victory through the Merkavah
You may chant those names of God/dess.

Shin trinitizes the elements of fire, water and Earth by
sending her fire roots through water then deep into Earth.

Kundalini Omega Minus Function 2nd Attunement Affirmation:

Kali, Awaken Now, Oh honorable Kundalini who hath held protected my Sacred Sexual Creative Power. The time is NOW to unfurl and rise! Oh Shekhina Fire, tempered by my will, submitting to Arch Angel Uriel's Wisdom and Dominion.

Your Glorious Flow of Divinity Within is now awake!
Receive now open Yod Spectrum Superscripts; sacred fire letters of translation of light into Light. Crow! Assist!

For you have traversed the lower and higher Heavens bringing sacred fire to my Ancestors and I honor you and ask for your courage and tenacity.



3rd Attunement's Companion **Information**

There are codes of Lightbody for every function within the human body. These are essential to shift entropy to regeneration. This allows you to easily and safely move amongst various states of awareness in more than one place at once in simultaneity if you so choose. It ensures that all of who you are that belongs here with you returns from each sojourn.

Kundalini Omega Minus Function

3rd Attunement Affirmation:

Activate the Ichor codes of my Lightbody.

Men-Ha-Ada-Mah
Men-Ha-Ada-Mah
Men-Ha-Ada-Mah

Transpose my blood into ever higher levels of Creation That I may be conscious everywhere I AM, where ever I choose to place my conscious awareness; Safely returning all of me that resides here Fully into physicality and easily and gracefully.

Enjoying simultaneity.

Ehyeh Asher Eheyeh

I AM THAT I AM!!

(or say the words in your own native or sacred language).

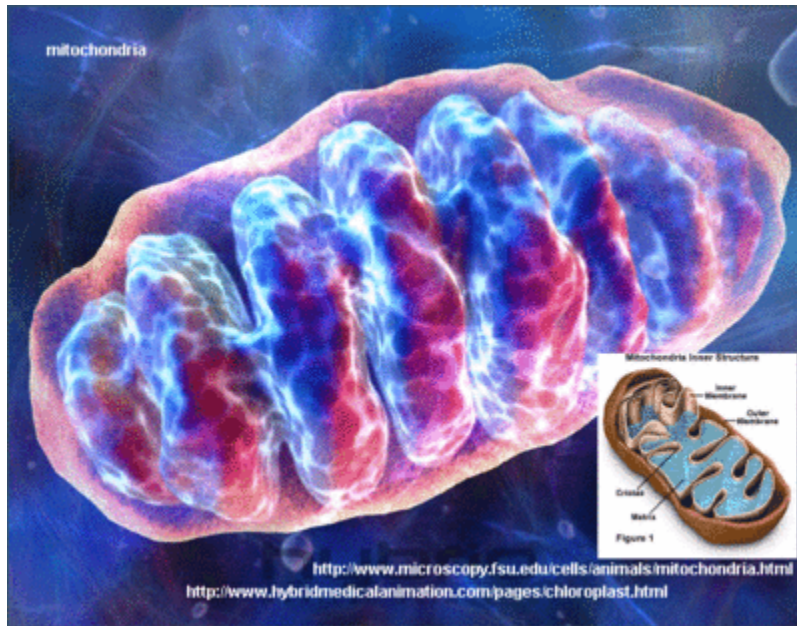
4th Attunement's Companion **Information**

Zeroth Point Energy Pyramidal configuration that connects you to Eternal Sacred Source outside of your physicality. Axiotonal Lines of Light when activated can connect you with their

Celestial counterparts. Biotransducer Subsystem can ethereally be put into place within our body to change energy from one form to another.

The Cristae in our mitochondria (the inner membranes) are wonderful Bio-transducers.

They simply need to be instructed in a way they will understand and agree with. An Orium is placed around these operations.



Kundalini Omega Minus Function

4th Attunement Affirmations:

Adjust, Align and Install my Bio-transducer subsystem
for Zeroth Point Energy receipt as pyramidal energy
Configuration of Light Cones impeccably, continuously
Receiving of Eternal Sacred Source
Recognized by my body and spirit as a Superior Energy
Source immediately useable for all
needs and desires.

Connect and activate my Axiotonal Lines with
their correspondents. Update the Cristae of my mitochondria
for steady increased production and output of ATP in
alignment with Eternal Sacred Love and Light of Source.
Seal with Orium.
Thank-You!

5th Attunement Companion **Information**

Qoph, as a letter of the Hebrew Aleph-Beth, represents the back of the head, at the top of the neck. Resh, as a letter of the Hebrew Aleph-Beth, represents the Head and our will. Omega Minus Function Ω in spiritual terms is best described by the Glossary of the Keys of Enoch, which is included at the end of this manual for your perusal. Omega, as a Greek term for ending, represents this life system here in entropy which would naturally come to an end. It also represents our physicality losing the ability to thrive in higher frequencies. Minus is a reversal of entropy to restore us to our entire Divine Birthright. And So It IS. In All Ways.

Kundalini Omega Minus Function 5th

Attunement Affirmation

Qoph, open the seal of my blood brain barrier to gracefully receive my Kundalini energy and the Kundalini Tummo Reiki arriving from Eternal Sacred Source. It joins my Seat of Intellect with the Fire of Divinity.

I AM A HOLY BEING!

Resh, as defender of my will abide with me as I completely open to Divine Will. I receive the Restoration of Unity with Eternal Sacred Source as I was before individuation into physicality. All that I have and will become in this life aligns to bring me Heaven on Earth. I AM perfectly synergized with all I have been in other times and places that serves me perfectly now. Prepare my body to be included in the totality of WHO I AM within DIVINITY, for mobility in the Higher Worlds through the Omega Minus Function. Ω

Thank you, Thank you, Thank you. And so it is.

Notes and Disclaimer:

Once the person who told you about this system gives you permission to accept your attunements, you may self attune with the affirmations.

Re-attune yourself as often as your inner guidance directs.

In order to bring these energies to this reality, I was completely cloistered for 3 ½ days.

I returned no phone calls and had only very minimal contact with any humans during those days.

It is because these attunement energies are complex that it was recommended that they be sent into Eternal Moments.

(Rev. Dr. Osgaldor Jason Storm's self attunement method)

Any sincere seeker may, with their intent, as one would in a prayer, read the attunement affirmations and receive continually updated KOMF attunements, perfectly, anytime, anywhere.

You receive them only from where they are held safe within
Eternal Sacred Source.

Do not accept any attunements direct from a teacher. These
are not meant to be passed from one person to another.

There is no lineage.

I, Mariah Windsong, brought them through to this reality,
however, Eternal Sacred Source is holding them safe and
releases them to each sincere seeker.

Kundalini Omega Minus Function attunements and manual
are for self enrichment purposes only, and do not diagnose
nor treat any disease or illness.

Please always seek immediate care from the properly
licensed professional if you are not well.

This KOMF manual and associated attunements must be
kept intact with no changes. You may sell this manual at a
fixed price of \$11 per attunement or \$55.

(or the equivalent in your monetary currency)

You must send the entire manual with all attunement
affirmations even if someone has only purchased one
attunement thus far.

If the person who provides you with this manual has
requested that you pay for each attunement, I request that
you refrain from calling in the next attunement until you have
transferred the agreed upon monies.

Be respectful of the Energy System Teacher who
told you of this system.

This manual may be given for free.

Use your inner guidance in each individual situation.

Living Life in Spectrum Light,
Rev. Dr. Mariah Windsong Couture, DD, RMT
December 2009 ~All Rights Reserved~

Glossary of Terms:

All are derived from J.J. Hurtak's *"The Book of Knowledge: The Keys of Enoch"*

The Keys of Enoch book and definitions are written in Spiritual Scientific, which opens codes in our bodies, so that even if we don't mentally understand what is being read, it helps us, so please read.

Orium: A micro-component of Light placed around a region of activity so it can operate with other fields of existence. A primal ingredient of the inner-protonic structure which is divided into three parts.

Cosmic counterpart to w^+ , w^- , w^0

Or Light: It is Light that is transmitted from the higher heavens to the planetary worlds.
Or Light finds its counterpart in Ur, the light that is activated by higher consciousness and dispatched from the planet into the dimensions of the higher worlds.

Omega Minus Function: The transhuman restoration of the body according to its perfect Overself Body of Light before it took on incarnation and was sent into life as a gift of Divine Grace. The function used by higher spiritual intelligence to align the mathematical network of the electrons within the body with a luminous mathematical counterpart on a different level of energy. Here mortality is aura-surmounted and, in a paradigm of super-time coordinated by the Masters of Light, transition is possible through the anti-world screen of particles. On the higher planes of transition, $-(+w)$ is not equal to $-w$ in general, nor is $-(-w)$ equal to $+w$ in general.

Zeroth Point Energy (ZPE): It is defined as a condition of over unity, i.e.; where more energy is received than inputted.

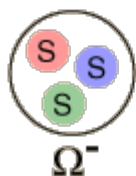
ZPE “vacuum fluctuations”: It implies that no source is recognized for such energy excess. Pyramidal shape or Light Cone represents an energy vortex. The source is not a point Zeroth dimension or the ‘vacuum’-absence of matter energy which would be effect without cause, but rather an energy connection to an outside energy reservoir, through the pyramidal energy vortex.

The following is a definition for Omega-Minus from:

<http://hyperphysics.phy-astr.gsu.edu/hbase/particles/omega.html>

The Omega-Minus Baryon

Particle	Symbol	Makeup	Rest mass MeV/c ²	B	S	Lifetime	Decay Mode s
Omega	Ω^-	sss	1672	3/2	+1	-3	0.82 $\times 10^{-10}$ $\Xi^0 \pi^-$ $\Lambda^0 K^-$



Omega-minus
baryon

Mass = 1672 MeV/c²

Ω^- S = "strange" quark $-\frac{1}{3}e$

The [omega-minus](#), a [baryon](#) comp

The omega-minus was produced by a K^-p collision which produced the omega-minus and two kaons.



Considering the [particle conservation laws](#), this interaction [conserves strangeness](#) and therefore proceeds by the [strong interaction](#).

This document was created with Win2PDF available at <http://www.win2pdf.com>.
The unregistered version of Win2PDF is for evaluation or non-commercial use only.
This page will not be added after purchasing Win2PDF.